

**Austria**  
Ammeraal Beltech GmbH Austria  
tel: +43 1292 9372  
fax: +43 1292 8906  
e-mail: info@ammeraalbeltech.at

**Belgium**  
Ammeraal Beltech N.V.  
tel: +32 2466 0300  
fax: +32 2466 4272  
e-mail: salesgb@ammeraal-beltech.be

**Canada**  
Ammeraal Beltech Modular, Inc.  
tel: +1 610 372 1800  
fax: +1 610 372 3590  
e-mail: sales@unichains.com

**Chile**  
Ammeraal Beltech Chile S.A.  
tel: +56 2669 6975  
fax: +56 2669 6709  
e-mail: ventas@ammeraalbeltech.cl

**China**  
AA Industrial Belting (Shanghai) Co. Ltd.  
tel: +86 21 6534 4690  
fax: +86 21 6548 0430  
e-mail: webmaster@ammeraalbeltech.com.cn

**Czech Republic**  
Ammeraal Beltech s.r.o.  
tel: +420 567 563 631  
fax: +420 567 330 637  
e-mail: prodeje@ammeraalbeltech.cz

**Denmark**  
Ammeraal Beltech Modular A/S  
tel: +45 7572 3100  
fax: +45 7572 3348  
e-mail: salesnordic@unichains.dk

**Finland**  
Ammeraal Beltech Oy  
tel: +358 207 911 400  
fax: +358 207 911 450  
e-mail: info@ammeraalbeltech.fi

**France**  
Ammeraal Beltech S.A.S.  
tel: +33 3 2090 3600  
fax: +33 3 2032 2917  
e-mail: client@ammeraalbeltech.fr

**Germany**  
Ammeraal Beltech Modular GmbH  
tel: +49 5971 91437 0  
fax: +49 5971 91547 5  
e-mail: admin@unichains.de

**Hungary**  
Ammeraal Beltech Lőrincz Ltd.  
tel: +36 2342 7510  
fax: +36 2342 7511  
e-mail: info@ammeraalbeltech.hu

**Ireland**  
Ammeraal Beltech Ireland  
tel: +44 121 559 0377  
fax: +44 121 559 0373  
e-mail: admin@unichains.co.uk

**Italy**  
uni-chains italia s.r.l.  
tel: +39 0522 922470  
fax: +39 0522 922508  
e-mail: unichains@unichains.it

**Japan**  
Ammeraal Beltech K.K.  
tel: +81 52 209 2977  
fax: +81 52 231 1102  
e-mail: s-sakai@unichains.co.jp

**Luxembourg**  
Ammeraal Beltech S.a.r.l.  
tel: +352 2648 3856  
fax: +352 2648 3857  
e-mail: sales@ammeraal-beltech.lu

**Malaysia**  
Ammeraal Beltech Sdn. Bhd.  
tel: +60 3 8061 8849  
fax: +60 3 8061 8935  
e-mail: sales.kl@ammeraalbeltech.com.my

**Netherlands**  
Ammeraal Beltech B.V.  
tel: +31 72 575 1212  
fax: +31 72 574 3364  
e-mail: info@ammeraalbeltech.nl

**Norway**  
Ammeraal Beltech Modular NO  
tel: +47 2220 2699  
fax: +45 7572 3348  
e-mail: salesnordic@unichains.com

**Portugal**  
Ammeraal Beltech S.A.  
tel: +351 22 947 9440  
fax: +351 22 941 3081  
e-mail: geral@ammeraalbeltech.pt

**Russia**  
O.O.O. Ammeraal  
tel: +07 495 234 2357  
fax: +07 495 234 8803  
e-mail: ammeraal@mtu-net.ru

**Singapore**  
Ammeraal Beltech Pte Ltd.  
tel: +65 6273 9767  
fax: +65 6273 5490  
e-mail: sales@ammeraalbeltech.com.sg

**Slovakia**  
Ammeraal Beltech s.r.o.  
tel: +421 2 5564 8541  
fax: +421 2 5564 8543  
e-mail: predaj@ammeraalbeltech.sk

**South Korea**  
Ammeraal Beltech Co. Ltd.  
tel: +82 31 448 3613 7  
fax: +82 31 448 3618  
e-mail: amel@ammeraalbeltech.co.kr

**Spain**  
Ammeraal Beltech S.A.  
tel: +34 961 2186 38  
fax: +34 961 2186 39  
e-mail: cem@ammeraalbeltech.es

**Sweden**  
Ammeraal Beltech AB  
tel: +46 44 43015  
fax: +46 44 43349  
e-mail: info@ammeraal-beltech.se

**Switzerland**  
Ammeraal Beltech AG  
tel: +41 55 2253 535  
fax: +41 55 2253 636  
e-mail: info@ammeraal-beltech.ch

**Thailand**  
Ammeraal Beltech Co. Ltd.  
tel: +66 2902 2604  
fax: +66 2902 0422  
e-mail: sales@ammeraalbeltech.th.com

**Ukraine**  
ABSC Ukraine Ltd.  
tel: +380 563 723211  
fax: +380 563 713100  
e-mail: ammeraal@ukr.net

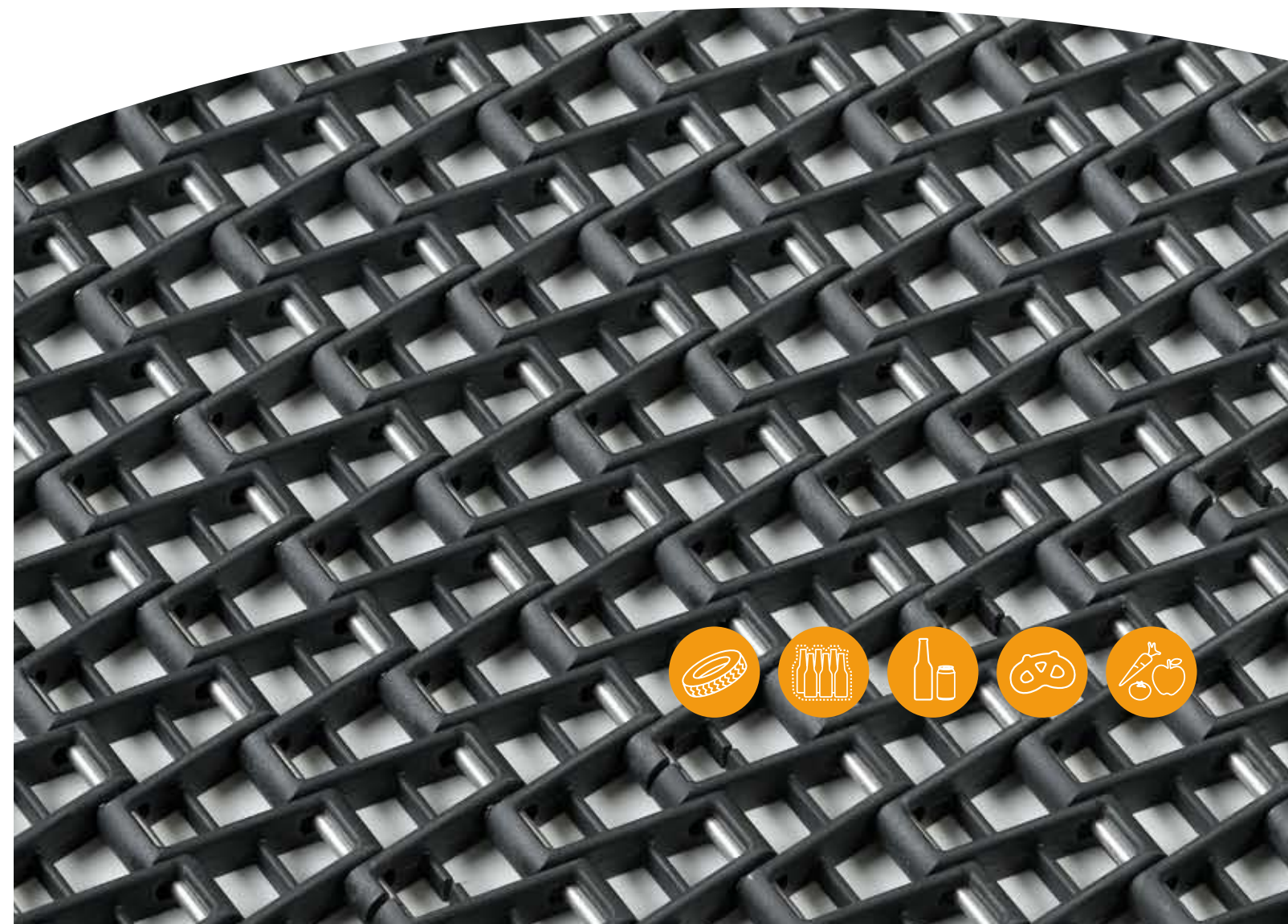
**United Kingdom**  
Ammeraal Beltech UK  
tel: +44 121 559 0377  
fax: +44 121 559 0373  
e-mail: modular@ammeraalbeltech.co.uk

**United States**  
Ammeraal Beltech Modular, Inc.  
tel: +01 610 372 1800  
fax: +01 610 372 3590  
e-mail: sales@unichains.com

[www.unichains.com](http://www.unichains.com)

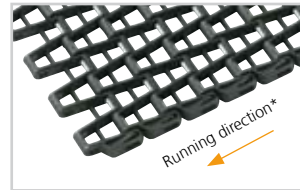


# Plastic Modular Belt Series uni OWL





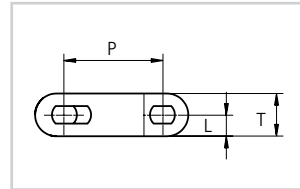
### Standard Selection



\* Travel in both directions is possible. uni-chains recommends this travel direction.

uni OWL  
Surface opening 66%

### Dimensional Sketch



uni OWL



Belt: uni OWL

Together with the material properties, the open belt design with minimal contact surface provides heat resistance, easy plastic film release and good airflow.

### Belt Weights

uni OWL | Belt material: PA6.6 GFH | Pin material: SS: 7.7 kg/m<sup>2</sup> (1.58 lb/ft<sup>2</sup>)

uni OWL | Belt material: PP | Pin material: PA6.6: 4.6 kg/m<sup>2</sup> (0.94 lb/ft<sup>2</sup>)

### Standard Materials and Colors

Type	Standard materials and colors	Standard pin materials and colors	Standard lock materials and colors
uni OWL	PA6.6 GFH <b>K</b>	SS304	PA6.6 GFH <b>K</b>
	PP <b>W</b>	PBT <b>LG</b>	PP <b>W</b>



**Travel direction**  
Straight running



**Pitch**  
27.9 mm (1.10 in.)



**Pin diameter**  
ø4 mm (0.16 in.)



**Backflex radius**  
40 mm (1.57 in.)

### Dimensions

	mm	in.
<b>P</b>	27.9	1.10
<b>L</b>	5.5	0.22
<b>T</b>	11.0	0.43

### FEATURES

**“uni OWL – the heat and wear resistant belt with minimal friction surface”**

>uni OWL 1.1 in. pitch belt is created for applications requiring a large open area.<



Belt: uni OWL

### Standard Bricklaid Belt Widths

mm	in.	mm	in.	mm	in.	mm	in.
305	12.0	645	25.4	984	38.7	1323	52.1
339	13.3	679	26.7	1018	40.1	1357	53.4
373	14.7	713	28.1	1052	41.4	1391	54.8
407	16.0	746	29.4	1085	42.7	1425	56.1
441	17.4	780	30.7	1120	44.1	1459	57.4
475	18.7	814	32.0	1154	45.4	1493	58.8
509	20.0	848	33.4	1188	46.8	1527	60.1
543	20.7	882	34.7	1222	48.1	1561	61.5
577	22.7	916	36.1	1255	49.4	1595	62.8
611	24.1	950	37.4	1289	50.7	1629	64.1

Note: Above widths are belts in PA6.6 GFH material. In PP material, the belt width is 1% smaller. On above belt width values, the belt width tolerance on standard materials is +0/-0.4% at 23°C/73°F.

### Permissible Tensile Strengths

uni OWL | Belt material: PA6.6 GFH | Pin material: SS: 12000 N/m (822 lbf/ft)

uni OWL | Belt material: PP | Pin material: PA6.6: 8000 N/m (548 lbf/ft)

### Standard Sprockets



**No. of teeth:** 9, 11, 13, 15  
**Sprocket width:** 30.0 mm (1.18 in.)  
**Tooth width:** 12.5 mm (0.49 in.)  
**Standard material:** PA6

Other sprocket sizes and two-part sprockets are available upon request.

### Max. Load per Sprockets

uni OWL | Belt material: PA6.6 GFH: 1200 N (270 lbf) | Belt material: PP: 800 N (180 lbf)

### INDUSTRIES

The uni OWL belt has increased performance in the following industries/applications:

- Shrinking tunnels without the need for lubrication and without black wear debris
- Bakery industries, including cooling lines
- Fruit and vegetable applications including accumulation tables, dewatering and cooling lines
- Batch-off, deep tank and cooling belts for tire industry



Belt: uni OWL



Belt: uni OWL

### BENEFITS

#### Operational product benefits

- Minimal friction and contact between product and belt
- Large open area for easy drainage/airflow (66% open belt)
- Special material allows operating temperature of 180°C (356°F) and makes the belt resist peak temperature up to 230°C (446°F)
- Patented non-stick belt surface